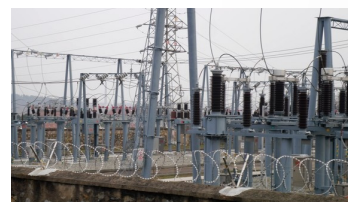
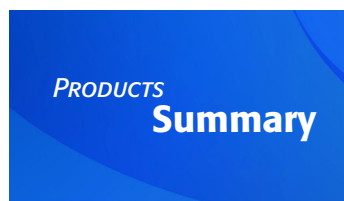


# CHSUN Valve

JUST KNIFE GATE VALVE

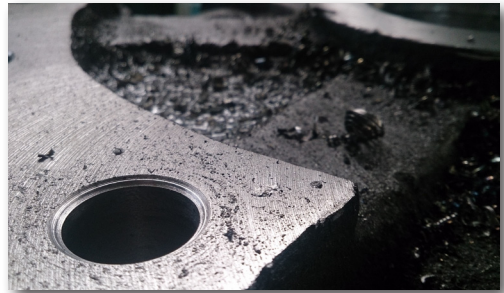






## Company

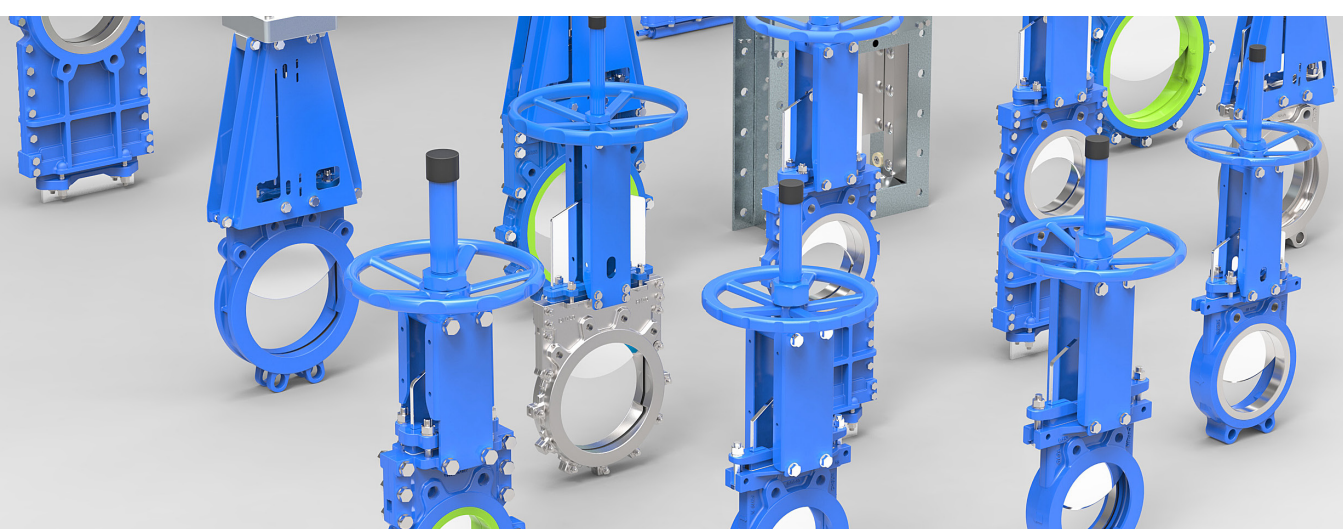
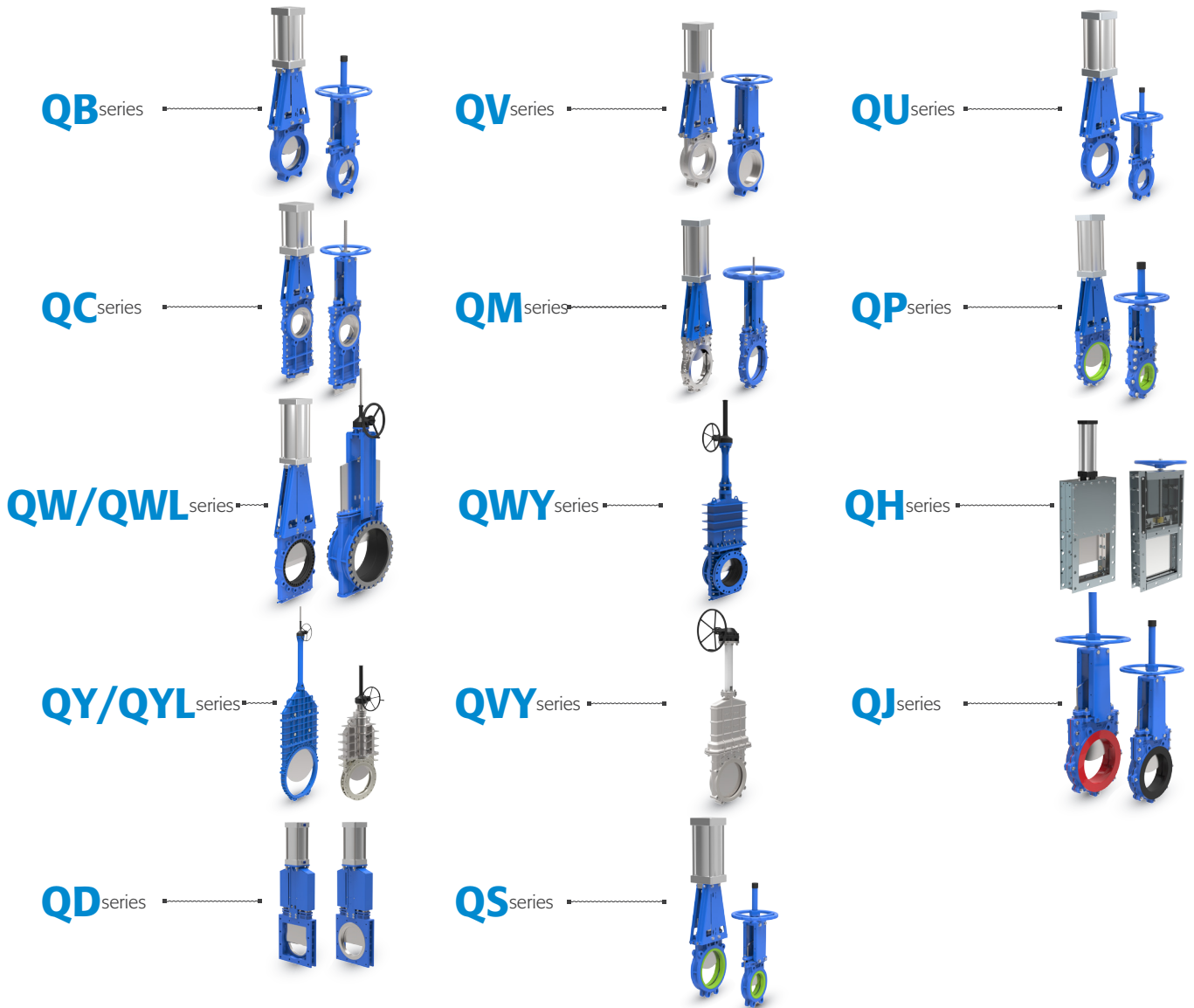
**CHISUN** is specialized in production of over 15 series different kinds of knife gate valves in more than 2800 specifications. We have obtained more than 20 national patents and owned the new national key product. We've also been involved in the national torch project. Our knife gate valves are widely used in different situations and applied to different systems, such as paper productions, foodstuff, metallurgy, electric power plant, petrochemical application, sewage treatment and so on. Our valves strictly execute MSS-SP 81 standard on the pressure test. For now, our business has been well behaved in domestic and abroad. We have a lot of clients in Europe, USA, Australia, Indonesia, South Africa, Russia, etc. And we have now acquired ISO9001 certificate.



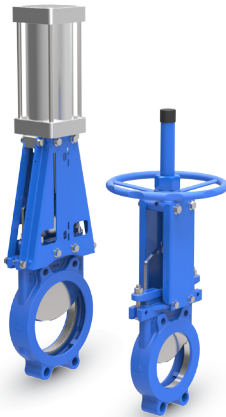


# Products

More than 50 countries cooperation and projects



## QB

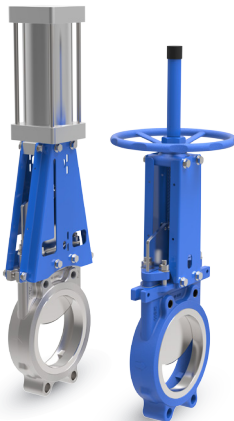


Unidirectional Seal Knife Gate Valve/Light Seat Replaceable

### QB series Unidirectional Seal Knife Gate Valve/Light Seat Replaceable

<b>Model:</b>	QBZ73X
<b>Working Pressure:</b>	DN50-DN100 16kgs DN125-DN200 10kgs DN250-DN400 7kgs DN450-DN600 5kgs DN650-DN750 4kgs DN800-DN900 3kgs DN1000 2kgs
<b>Design Standard:</b>	JB/T8691-2013
<b>Flange Standard:</b>	GB/T9113.1-2010
<b>Face to face:</b>	GB/T15188.2-94 chart6-7
<b>Testing Standard:</b>	GB/T13927-2008
<b>Operation:</b>	manual, electric, pneumatic, hydraulic, chain, electro-hydraulic, gear
<b>Main material:</b>	F55.F53.2205.CF3M.CF8M.CF8.WCB.GGG40
<b>Disc material:</b>	F55, F53,2205, SS310, SS316L,SS316, SS304
<b>Sealing material:</b>	NBR ,EPDM, FKM, PTFE, Metal to Metal
<b>Packing:</b>	PTFE, Aramid packing, high water based , graphite
<b>Applicable medium:</b>	Suitable for general purpose

## QV

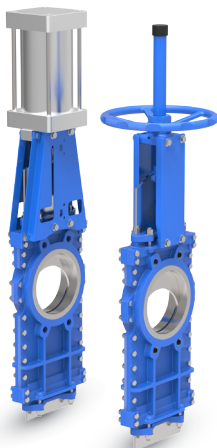


Unidirectional Seal Knife Gate Valve/Heavy Seat Replaceable

### QV series Unidirectional Seal Knife Gate Valve/Heavy Seat Replaceable

<b>Model:</b>	QVZ73X
<b>Working Pressure:</b>	DN50-DN100 16kgs DN125-DN200 10kgs DN250-DN400 7kgs DN450-DN600 5kgs DN650-DN750 4kgs DN800-DN900 3kgs DN1000 2kgs
<b>Design Standard:</b>	JB/T8691-2013
<b>Flange Standard:</b>	GB/T9113.1-2010
<b>Face to face:</b>	GB/T15188.2-94 chart6-7
<b>Testing Standard:</b>	GB/T13927-2008
<b>Operation:</b>	manual, electric, pneumatic, hydraulic, chain, electro-hydraulic, gear
<b>Main material:</b>	F55.F53.2205.CF3M.CF8M.CF8.WCB.GGG40
<b>Disc material:</b>	F55, F53,2205, SS310, SS316L,SS316, SS304
<b>Sealing material:</b>	NBR ,EPDM, FKM, PTFE, Metal to Metal
<b>Packing:</b>	PTFE, Aramid packing, high water based , graphite
<b>Applicable medium:</b>	Applicable for sugar, paper, sewage, tailings, slagging, and other general purpose.

## QC

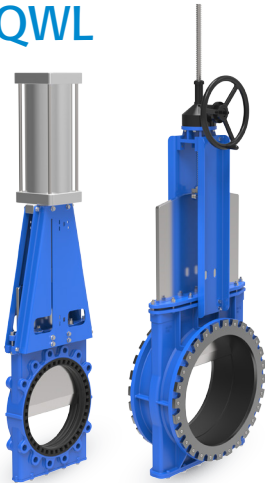


Bi-directional Seal Knife Gate Valve/Disc Through type

### QC series Bi-directional Seal Knife Gate Valve/Disc Through type

<b>Model:</b>	QCZ73X
<b>Working Pressure:</b>	DN50-DN100 16kgs DN125-DN200 10kgs DN250-DN400 7kgs DN450-DN600 5kgs DN650-DN750 4kgs DN800-DN900 3kgs DN1000 2kgs
<b>Design Standard:</b>	JB/T8691-2013
<b>Flange Standard:</b>	GB/T9113.1-2010
<b>Face to face:</b>	GB/T15188.2-94 chart6-7
<b>Testing Standard:</b>	GB/T13927-2008
<b>Operation:</b>	manual, electric, pneumatic, hydraulic, chain, electro-hydraulic, gear
<b>Main material:</b>	F55.F53.2205.CF3M.CF8M.CF8.WCB
<b>Disc material:</b>	F55, F53,2205, SS310, SS316L,SS316, SS304
<b>Sealing material:</b>	NBR ,EPDM, PTFE, Metal to Metal
<b>Packing:</b>	PTFE, Aramid packing, high water based , graphite
<b>Applicable medium:</b>	Applicable for paper, asphalt, tailings, slagging, cement, slime, dust, Solid Particles, deslagging and so on.

## QW/QWL



Bi-directional Self-sealing  
Knife Gate Valve

## QW/QWL

series  
Bi-directional Self-sealing Knife Gate Valve

**Model:** QWZ73X  
**Working Pressure:** DN50-DN100 8kgs  
 DN125-DN200 5kgs  
 DN250-DN400 3.5kgs  
 DN450-DN600 2.5kgs  
 DN650-DN750 2kgs  
 DN800-DN900 1.5kgs  
 DN1000 1kgs  
**Design Standard:** JB/T8691-2013  
**Flange Standard:** GB/T9113.1-2010  
**Face to face:** GB/T15188.2-94 chart6-7  
**Testing Standard:** GB/T13927-2008  
**Operation:** manual, electric, pneumatic, hydraulic, chain, electro-hydraulic, gear  
**Main material:** F55.F53.2205.CF3M.CF8M.CF8.WCB.GGG40  
**Disc material:** F55, F53,2205, SS310, SS316L,SS316, SS304  
**Sealing material:** NR, EPDM  
**Packing:** graphite  
**Applicable medium:** Applicable for mud, pulp, slurry, tailings, cyclones, shields and so on.

## QWY



Bi-directional Seal Knife Gate Valve/  
Fully Enclosed Medium Pressure

## QWY

series  
Bi-directional Seal Knife Gate Valve/Fully Enclosed Medium Pressure

**Model:** QWYZ53X  
**Working Pressure:** DN80-DN700 25kgs  
 DN800 20kgs  
 DN1000-DN1400 10kgs  
**Design Standard:** JB/T8691-2013  
**Flange Standard:** GB/T9113.1-2010  
**Face to face:** GB/T15188.2-94 chart6-7  
**Testing Standard:** GB/T13927-2008  
**Operation:** manual, electric, pneumatic, hydraulic, chain, electro-hydraulic, gear  
**Main material:** F55.F53.2205.CF3M.CF8M.CF8.GGG40  
**Disc material:** F55, F53,2205, SS310, SS316L,SS316, SS304  
**Sealing material:** NR, EPDM  
**Packing:** graphite  
**Applicable medium:** Applicable for mud, pulp, slurry, tailings, cyclones, shields and so on.

## QJ



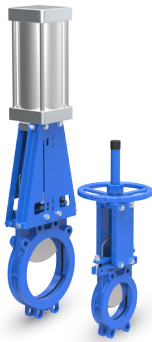
Bi-directional Fully Rubber  
Lining Knife Gate Valve

## QJ

series  
Bi-directional Fully Rubber Lining Knife Gate Valve

**Model:** QJZ73X  
**Working Pressure:** DN50-DN200 16bar  
 DN250-DN400 10bar  
**Design Standard:** JB/T8691-2013  
**Flange Standard:** GB/T9113.1-2010  
**Face to face:** GB/T15188.2-94 chart6-7  
**Testing Standard:** GB/T13927-2008  
**Operation:** manual, electric, pneumatic, hydraulic, chain, electro-hydraulic, gear  
**Main material:** GGG40  
**Disc material:** FF55.F53.2205.CF3M.CF8M.CF8.Q235,SS316L,SS304  
**Sealing material:** NR  
**Packing:** PTFE, Aramid packing, high water based , graphite  
**Applicable medium:** Applicable for high pressure, sewage treatment, paper, Slurry, Mining, sedimentation tank, mud, tailings and so on.

## QU



Integral Bi-directional seal non-groove Knife Gate Valve

### QU series Integral Bi-directional seal non-groove Knife Gate Valve

<b>Model:</b>	QUZ73X			
<b>Working Pressure:</b>	DN50-DN100	16kgs	DN650-DN750	4kgs
	DN125-DN200	10kgs	DN800-DN900	3kgs
	DN250-DN400	7kgs	DN1000	2kgs
	DN450-DN600	5kgs		
<b>Design Standard:</b>	JB/T8691-2013			
<b>Flange Standard:</b>	GB/T9113.1-2010			
<b>Face to face:</b>	GB/T15188.2-94 chart6-7			
<b>Testing Standard:</b>	GB/T13927-2008			
<b>Operation:</b>	manual, electric, pneumatic, hydraulic, chain, electro-hydraulic, gear			
<b>Main material:</b>	GGG40			
<b>Disc material:</b>	SS316L, SS304			
<b>Sealing material:</b>	NBR, EPDM			
<b>Packing:</b>	PTFE, Aramid packing, high water based, graphite			
<b>Applicable medium:</b>	Applicable for sewage treatment, paper, sedimentation tanks, mud and so on.			

## QS



Integral Bi-directional seal Knife Gate Valve non-groove Wear-Resistant

### QS series Integral Bi-directional seal Knife Gate Valve non-groove Wear-Resistant

<b>Model:</b>	QSZ43X			
<b>Working Pressure:</b>	DN50-DN100	16kgs	DN650-DN750	4kgs
	DN125-DN200	10kgs	DN800-DN900	3kgs
	DN250-DN400	7kgs	DN1000	2kgs
	DN450-DN600	5kgs		
<b>Design Standard:</b>	JB/T8691-2013			
<b>Flange Standard:</b>	GB/T9113.1-2010			
<b>Face to face:</b>	GB/T15188.2-94 chart6-7			
<b>Testing Standard:</b>	GB/T13927-2008			
<b>Operation:</b>	manual, electric, pneumatic, hydraulic, chain, electro-hydraulic, gear			
<b>Main material:</b>	GGG40			
<b>Disc material:</b>	SS316L, SS304			
<b>Sealing material:</b>	NBR, EPDM, PU			
<b>Packing:</b>	PTFE, Aramid packing, high water based, graphite			
<b>Applicable medium:</b>	Applicable for sewage treatment, paper, sedimentation tanks, mud and so on.			

## QM



2PC Body Bi-directional seal non-groove Knife Gate Valve

### QM series 2PC Body Bi-directional seal non-groove Knife Gate Valve

<b>Model:</b>	QMZ73X			
<b>Working Pressure:</b>	DN50-DN200	16bar		
	DN250-DN600	10bar		
	DN650-DN700	8bar		
	DN750-DN1000	6bar		
	DN1200-DN2000	4bar		
<b>Design Standard:</b>	JB/T8691-2013			
<b>Flange Standard:</b>	GB/T9113.1-2010			
<b>Face to face:</b>	GB/T15188.2-94 chart6-7			
<b>Testing Standard:</b>	GB/T13927-2008			
<b>Operation:</b>	manual, electric, pneumatic, hydraulic, chain, electro-hydraulic, gear			
<b>Main material:</b>	F55, F53, 2205, CF3M, CF8M, CF8, WCB, GGG40			
<b>Disc material:</b>	F55, F53, 2205, SS310, SS316L, SS316, SS304			
<b>Sealing material:</b>	NBR, EPDM, FKM			
<b>Packing:</b>	PTFE, Aramid packing, high water based, graphite			
<b>Applicable medium:</b>	Applicable for high pressure, pulp, sewage treatment, paper, sedimentation tank, mud, tailings and so on.			

## QP



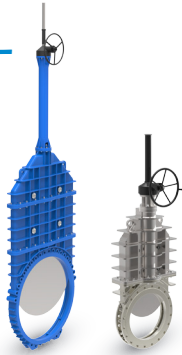
2PC Body Bi-directional seal Polyurethane non-groove lining Knife Gate Valve

### QP series 2PC Body Bi-directional seal Polyurethane non-groove lining Knife Gate Valve

<b>Model:</b>	QPZ73PU			
<b>Working Pressure:</b>	DN50-DN200	16kgs		
	DN250-DN600	10kgs		
<b>Design Standard:</b>	JB/T8691-2013			
<b>Flange Standard:</b>	GB/T9113.1-2010			
<b>Face to face:</b>	GB/T15188.2-94 chart6-7			
<b>Testing Standard:</b>	GB/T13927-2008			
<b>Operation:</b>	manual, electric, pneumatic, hydraulic, chain, electro-hydraulic, gear			
<b>Main material:</b>	F55, F53, 2205, CF3M, CF8M, CF8, GGG40			
<b>Disc material:</b>	F55, F53, 2205, SS310, SS316L, SS316, SS304			
<b>Sealing material:</b>	improved polyurethane			
<b>Packing:</b>	PTFE, Aramid packing, high water based, graphite			
<b>Applicable medium:</b>	Applicable for mineral processing, sewage, tailings, slag, seawater, and other acid and alkali, wear, media conditions, such as cyclone.			



## QY/QYL



Unidirectional seal Knife Gate Valve(No-Rising Stem Available)

## QY/QYL

series

Unidirectional seal Knife Gate Valve(No-Rising Stem Available)

**Model:** QYZ73X/QYL73X  
**Working Pressure:** QY DN50-DN150 10kgs  
 DN200 8kgs  
 DN250-DN300 6kgs  
 DN350-DN400 5kgs  
 DN450-DN600 3kgs  
 DN700-DN1400 2kgs  
 QYL DN50-DN2000 16kgs  
 DN2200-DN3000 10kgs  
**Design Standard:** JB/T8691-2013  
**Flange Standard:** GB/T9113.1-2010  
**Face to face:** GB/T15188.2-94 chart6-7  
**Testing Standard:** GB/T13927-2008  
**Operation:** manual, electric, pneumatic, hydraulic, chain, electro-hydraulic, gear  
**Main material:** F55, F53, 2205, CF3M, CF8M, CF8, WCB, GGG40  
**Disc material:** F55, F53, 2205, SS310, SS316L, SS316, SS304  
**Sealing material:** NBR, EPD, FKM  
**Packing:** PTFE, Aramid packing, high water based, graphite  
**Applicable medium:** Applicable for steam, sewage, high pressure pipes and so on.

## QVY



Unidirectional seal full enclosed medium pressure Knife Gate Valve

## QVY

series

Unidirectional seal full enclosed medium pressure Knife Gate Valve

**Model:** QVYZ73X  
**Working Pressure:** DN80-DN2000 25kgs  
 DN2200-DN3000 16kgs  
**Design Standard:** JB/T8691-2013  
**Flange Standard:** GB/T9113.1-2010  
**Face to face:** GB/T15188.2-94 chart6-7  
**Testing Standard:** GB/T13927-2008  
**Operation:** manual, electric, pneumatic, hydraulic, chain, electro-hydraulic, gear  
**Main material:** F55, F53, 2205, CF3M, CF8M, CF8, WCB, GGG40  
**Disc material:** F55, F53, 2205, SS310, SS316L, SS316, SS304  
**Sealing material:** NBR, EPD, FKM  
**Packing:** PTFE, Aramid packing, high water based, graphite  
**Applicable medium:** Applicable for steam, sewage, high pressure pipes and so on.

## QH



Unidirectional, bidirectional seal three sides and four sides seal Knife Gate Valve

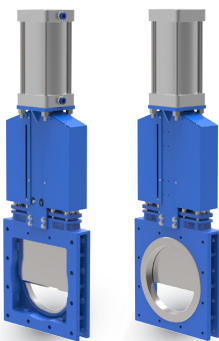
## QH

series

Unidirectional, bidirectional seal three sides and four sides seal Knife Gate Valve

**Model:** QHZ43X  
**Working Pressure:** DN150-DN400 0.1-1bar  
 DN450-DN550 0.1-1bar  
 DN600-DN800 0.1-1bar  
 DN850-DN900 0.1-1bar  
**Design Standard:** JB/T8691-2013  
**Flange Standard:** GB/T9113.1-2010  
**Face to face:** GB/T15188.2-94 chart6-7  
**Testing Standard:** GB/T13927-2008  
**Operation:** manual, electric, pneumatic, hydraulic, chain, electro-hydraulic, gear  
**Main material:** F55, F53, 2205, SS304, SS316, CF8, Q235  
**Disc material:** F55, F53, 2205, SS310, SS316L, SS316, SS304  
**Sealing material:** NBR, EPD, FKM, graphite, metal to metal  
**Packing:** PTFE, Aramid packing, high water based, graphite  
**Applicable medium:** Dust, Solid Particles, Coal, oil, chemical and so on.

## QD



Unidirectional seal deslagging Knife Gate Valve

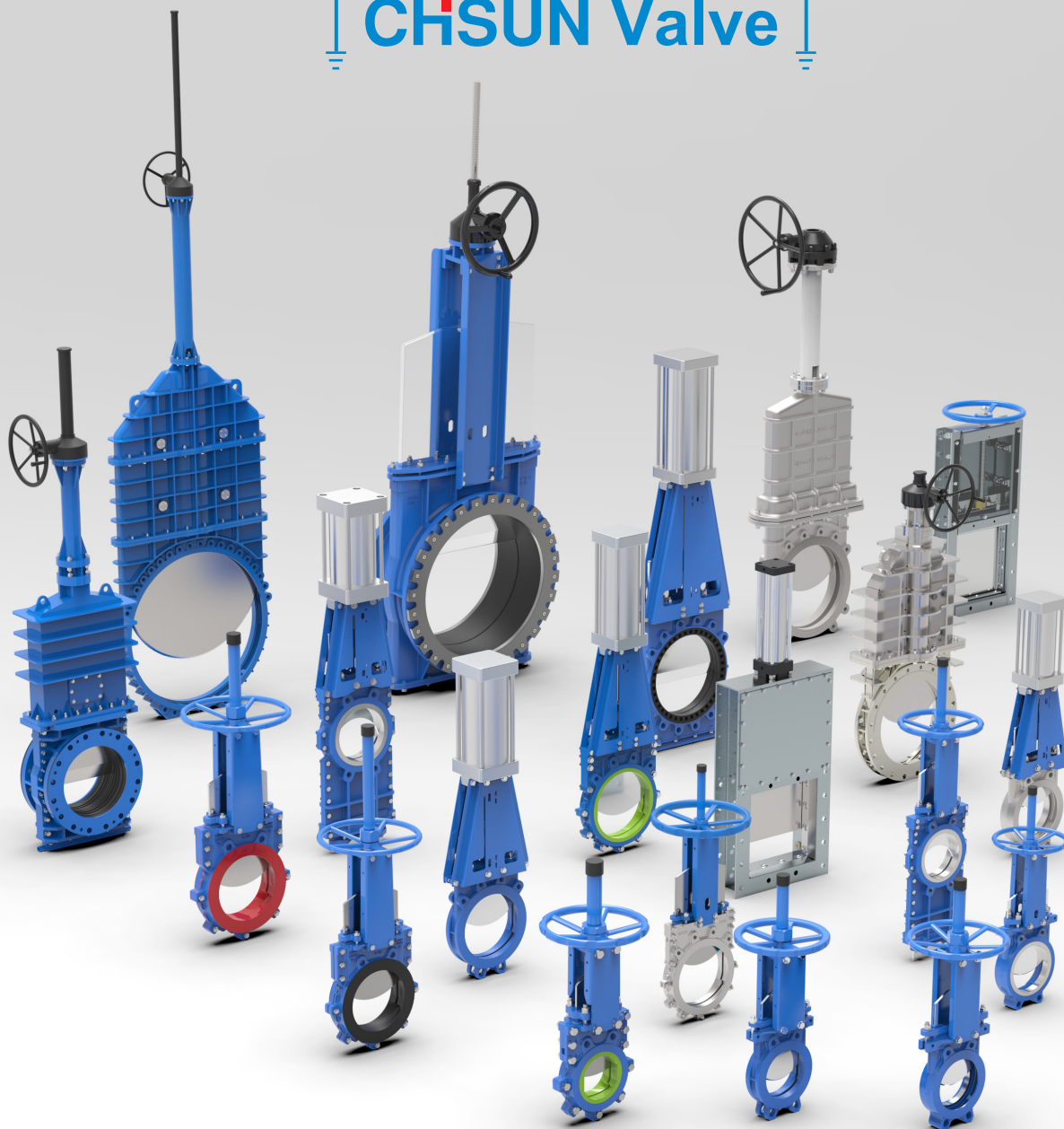
## QD

series

Unidirectional seal deslagging Knife Gate Valve

**Model:** QDZ43X  
**Working Pressure:** DN150-DN200 10bar  
 DN250-DN400 7bar  
 DN450-DN550 5bar  
 DN600-DN700 3bar  
**Design Standard:** JB/T8691-2013  
**Flange Standard:** GB/T9113.1-2010  
**Face to face:** GB/T15188.2-94 chart6-7  
**Testing Standard:** GB/T13927-2008  
**Operation:** manual, electric, pneumatic, hydraulic, chain, electro-hydraulic, gear  
**Main material:** F55, F53, 2205, CF3M, CF8M, CF8, WCB, GGG40  
**Disc material:** F55, F53, 2205, SS310, SS316L, SS316, SS304  
**Sealing material:** NBR, EPD, FKM, graphite, metal to metal  
**Packing:** PTFE, Aramid, high-water base, Rubber packing and graphite  
**Applicable medium:** powder, dedusting, dislagging and so on.

# CHSUN Valve



A-excellent B- good C-ordinary X-bad

name	natural rubber	Styrene Butadiene	Nitrile Butadiene Rubber	Ethylene-Propylene-Diene Monomer	Silica	Fluororubber	Polyurethane
code	<b>NR</b>	<b>SBR</b>	<b>NBR</b>	<b>EPDM</b>	<b>SI</b>	<b>FKM</b>	<b>PU</b>
min °C	-75	-55	-40	-55	-110	-30	-30
max °C	85	70	100	150	225	250	100
hard(shore A)	30~90	40~90	40~90	40~90	40~80	55~90	50~80
tensile(kgf/cm <sup>2</sup> )max	35	25	25	20	15	20	20
mineral oil	X	X	A	X	B	A	A
sulfuric acid	C	C	C	A	X	A	C
toluene	X	X	X	X	X	A	A
alcohol	B	B	A	A	X	A	X
Ether	X	X	C	X	X	X	C

## CHISUN VALVE CO.,LTD.

No.8 Xingyu Road Airport New District, Wenzhou,China

Web:www.chisunvalve.com

Tel:86-577-86623866  
Email:qs2@chisun.cn  
WhatsApp:+8613857701677  
WeChat:+8613857701677  
Contact: Danny

Tel:86-577-86852611  
Email:qs5@chisun.cn  
WhatsApp:+8613736317938  
WeChat:+8613736317938  
Contact: Anna

Email:qs9@chisun.cn  
WhatsApp:+8613505771513  
WeChat:+8613505771513  
Contact: Gina